

# DK

## 型 WORK-DRIVING CENTER - FIXED TIP



1. 此免夾頂針因機械之結構，故障率低。經深冷熱處理為(HRC60° ± 1°)。
2. 以往車床加工使用傳動夾來帶動，避免工作物之停止，此免夾頂針在本體端面有6T及8T之設計來頂住加工之端面，就可免用傳動夾，使加工方便速度更快。
3. 此免夾頂針，滾齒機械可適用。
4. 精度：0.008mm

1. Body and center shaft are made of alloy steel with heat and sub-zero treatment.

※ Hardened: HRC60° ± 1°.

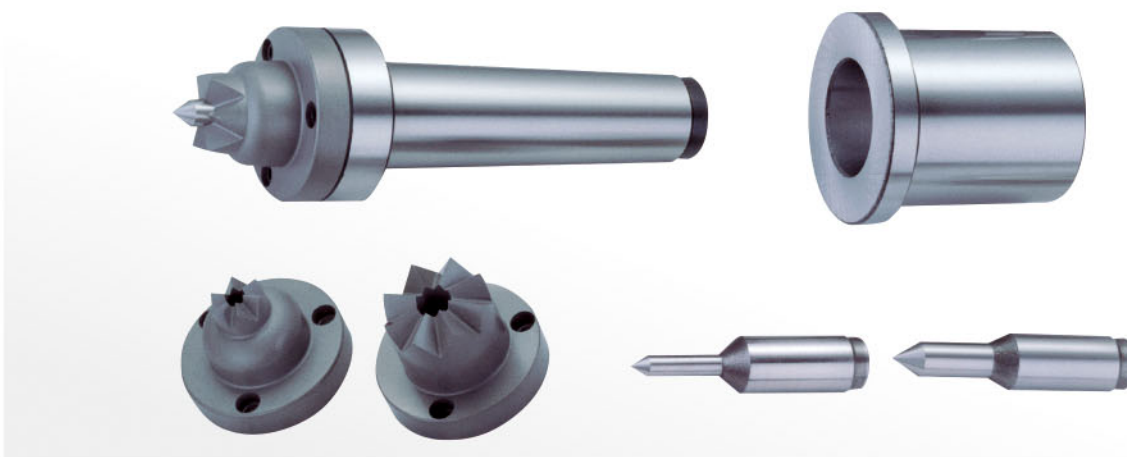
2. Driving dog is required for traditional lathes turning to prevent workpiece from stopping. These work driving centers are either with 6 teeth or 8 teeth design for superseding the driving dogs. It supports the workpiece on end surface for easy setup and rapid machining.

3. The work-driving center is also applicable for gear hobbing machine.

4. Accuracy: 0.008 mm

# DKS

## 型 WORK-DRIVING CENTER - CHANGEABLE TIPS



單位/Unit:mm

ORDER NO.	MORES TAPER MT/MK	心軸尺寸 Center Shaft size	外徑尺寸 Outer dia	工作範圍 Working range	G.W. WEIGHT kgs	包裝尺寸 L x W x H
08090015	DK-15 MT.4	6Ø	16Ø	16Ø - 25Ø	0.62 kgs	175 x 40 x 40
08090023	DK-23 MT.4	8Ø	23Ø	23Ø - 32Ø	0.64 kgs	175 x 40 x 40
08090032	DK-32 MT.4	8Ø . 14Ø	32Ø	32Ø - 45Ø	0.68 kgs	175 x 40 x 40
080900301	DKS-301 MT.4	6Ø . 8Ø . 10Ø	16Ø . 23Ø . 30Ø	15Ø - 45Ø	2.60 kgs	265 x 140 x 110