

# 自動式傳動頂針

AUTO ADJUSTABLE TRANSMISSION CENTER

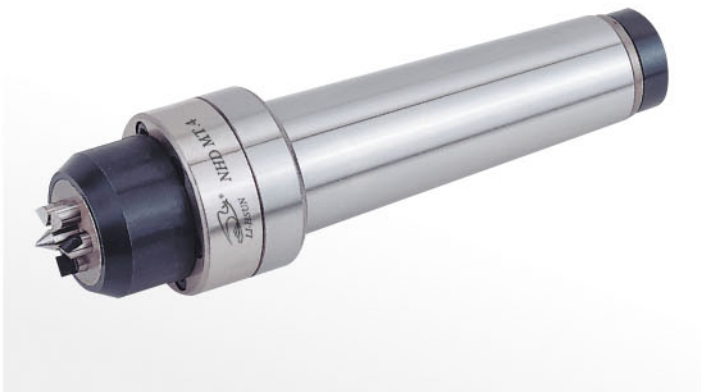


## NHD 型 TRANSMISSION CENTER



### 車床、CNC車床適用

1. 此自動式免夾頂針，適用端面不平的加工物。加工時，頂針之5T.6T會自動調整受力點，使加工物件能夠平均受力。
2. 其內部結構為強力優力膠設計，使頂針有較好的耐用性，不易破碎。在維修方面，也較容易更換。
3. 精度：0.008mm



### LATHE, CNC LATHE

1. The auto adjustable transmission center is suitable for the asperities of workpieces. The auto adjustable transmission center with 5T and 6T design on end surface is able to adjust the stress point so that the workpieces will be done easily.
2. The inside structure of the center is comprised of PU. It is nearly free of breakdown, and is durable and easy to fix.
3. Accuracy: 0.008mm

單位/Unit:mm

MORSE TAPER MT / MK	心軸尺寸 Center shaft size	外徑尺寸 Outer Dia.	工作範圍 Working Range	G.W. WEIGHT kgs	包裝尺寸 L x W x H
NHD-31 MT.4	Ø5	Ø16	1 2 Ø~20 Ø	1.76 kgs	200 x 90 x 80
NHD-32 MT.4	Ø9	Ø25	1 8 Ø~35 Ø	2.30 kgs	200 x 90 x 80
NHD-33 MT.4 / MT.5	Ø14	Ø39	3 0 Ø~55 Ø	2.94 / 3.16 kgs	250 x 110 x 100
NHD-34-MT.4 / MT.5	Ø18	Ø53	4 0 Ø~70 Ø	4.10 / 4.20 kgs	250 x 110 x 100

